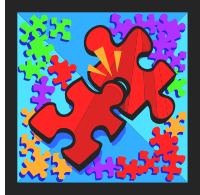


# Centennial Services



Life can sometimes feel like a puzzle, and we may find we need help with the problems preventing us from “making it all fit” so we can enjoy life.

Centennial offers a variety of services that can help.

## 24-Hour Emergency Services

Crisis interventions and evaluations to determine need for psychiatric hospitalizations are available across the 10-county area 24 hours per day, seven days per week.

## Evaluation Services

A variety of psychological testing and evaluation services, including psychiatric consultation, are available for individuals aged five through geriatrics. Testing and assessments include personality, intellectual achievement, vocational, and substance abuse evaluations.

## Outpatient Counseling

Outpatient services provide children, adolescents, adults and the elderly with a variety of therapy options to best fit individual needs. These include:

- ❖ Individual Counseling
- ❖ Couple Counseling
- ❖ Family Counseling
- ❖ Group Counseling (educational and therapeutic)
- ❖ Substance Abuse Counseling (including DUI Level I and II)



## Family Preservation

Services to families with children at risk for out-of-home placement include intensive family therapy, extensive case management and interagency collaboration.

## Mentoring Program

The mentoring programs are non-traditional approaches to providing non-clinical services to at risk youth and their families. The mentors provide individual, group and family activities, while promoting healthy relationships with others, improving self-esteem and parenting skills.

## Medication Services

Medication management and monitoring services are provided to consumers of all ages.

## Community Support Program

Support for individuals with severe and persistent mental disorders through:

- ❖ Therapeutic Intervention
- ❖ Case Management Services
- ❖ Medication Management
- ❖ Assessment of Functioning Level
- ❖ Social and Leisure Skills Development
- ❖ Training in Life and Work Skills

## Adult Residential Program

The residential facility in Sterling provides therapeutic programming in a community setting for individuals who are disabled by serious mental illness. The overall goal of the program is to provide the services necessary to enable clients to live and function independently in the community.

## May We Help You?

Our programs are designed to enhance the lives of the individuals, children, couples, and families we serve.

## Eligibility

For over 40 years, Centennial's services have been available to all residents of Cheyenne, Elbert, Kit Carson, Lincoln, Logan, Morgan, Phillips, Sedgwick, Washington and Yuma counties.

## Staff

Services provided by caring, professional staff trained in a variety of mental health disciplines:

- ❖ Clinical Social Workers
- ❖ Counselors
- ❖ Psychologists
- ❖ Psychiatrists

## Fees and Insurance

Fees vary according to services provided. Income based fee scale available. Medicaid and Medicare Private Insurance

## When You Call

You will receive prompt, professional, courteous service. You can be assured that your confidentiality will be respected to the fullest extent of the law.



*Not all services are available at all offices.*